



OMOM[®] Capsule Endoscopy Platform

Product Brochure



Elevate Patient Care with Capsule Endoscopy

Capsule endoscopy is a non-invasive, disposable, and safe diagnostic tool that is well established as a viable alternative in the evaluation of the small bowel. European Society of Gastrointestinal Endoscopy recommends small-bowel capsule endoscopy as the first-line examination, before consideration of other endoscopic and radiological diagnostic tests for suspected small-bowel bleeding, given the excellent safety profile of capsule endoscopy, its patient tolerability, and its potential to visualize the entire small-bowel mucosa. Strong recommendation, moderate quality evidence.[1]

To meet the increasing clinical demands, gastric capsule and colon capsule have been developed and launched into markets. The latest generation of gastric capsule is the Fully Automated Magnetically Controlled Capsule Endoscopy (FAMCE). Featured with no sedation, no intubation and hands-free operation, FAMCE has proven diagnostic efficiency comparable to conventional gastroscopy. Additionally, the double-headed pan-enteric capsule endoscopy further enabled the endoscopic assessment of colonic mucosa, emerging as a promising alternative for colorectal cancer screening, the third most common cancer worldwide.

With ongoing improvements in definition and AI-assisted case reading, capsule endoscopy is poised to deliver high-quality, non-invasive diagnostic solutions for gastrointestinal health.

[1] Marco Pennazio, et al. *Endoscopy*. 2023 Jan;55(1):58-95. doi: 10.1055/a-1973-3796. *Small-bowel capsule endoscopy and device-assisted enteroscopy for diagnosis and treatment of small-bowel disorders: European Society of Gastrointestinal Endoscopy (ESGE) Guideline - Update 2022*

Introducing OMOM® Platform

OMOM® Capsule Endoscopy platform consists of 3 non-invasive diagnostic systems *OMOM® RC*, *OMOM® HD* and *OMOM® CC*, respectively tailored for the stomach, small intestine and colon.

The comprehensive system includes a compact recorder unit, a pill-sized video capsule and our proprietary *VUESmart* reading software. *OMOM® RC* system is additionally equipped with a Robotic Movement Unit and a Control Console.

Versatile Components for All OMOM® Capsules

Recorder, Cradle, Antenna Belt, *VUESmart* Software



OMOM® Gastric Capsule Endoscopy

Robotic Movement Unit, Control Console, Robotic Capsule



OMOM® Small Bowel Capsule Endoscopy

HD Capsule



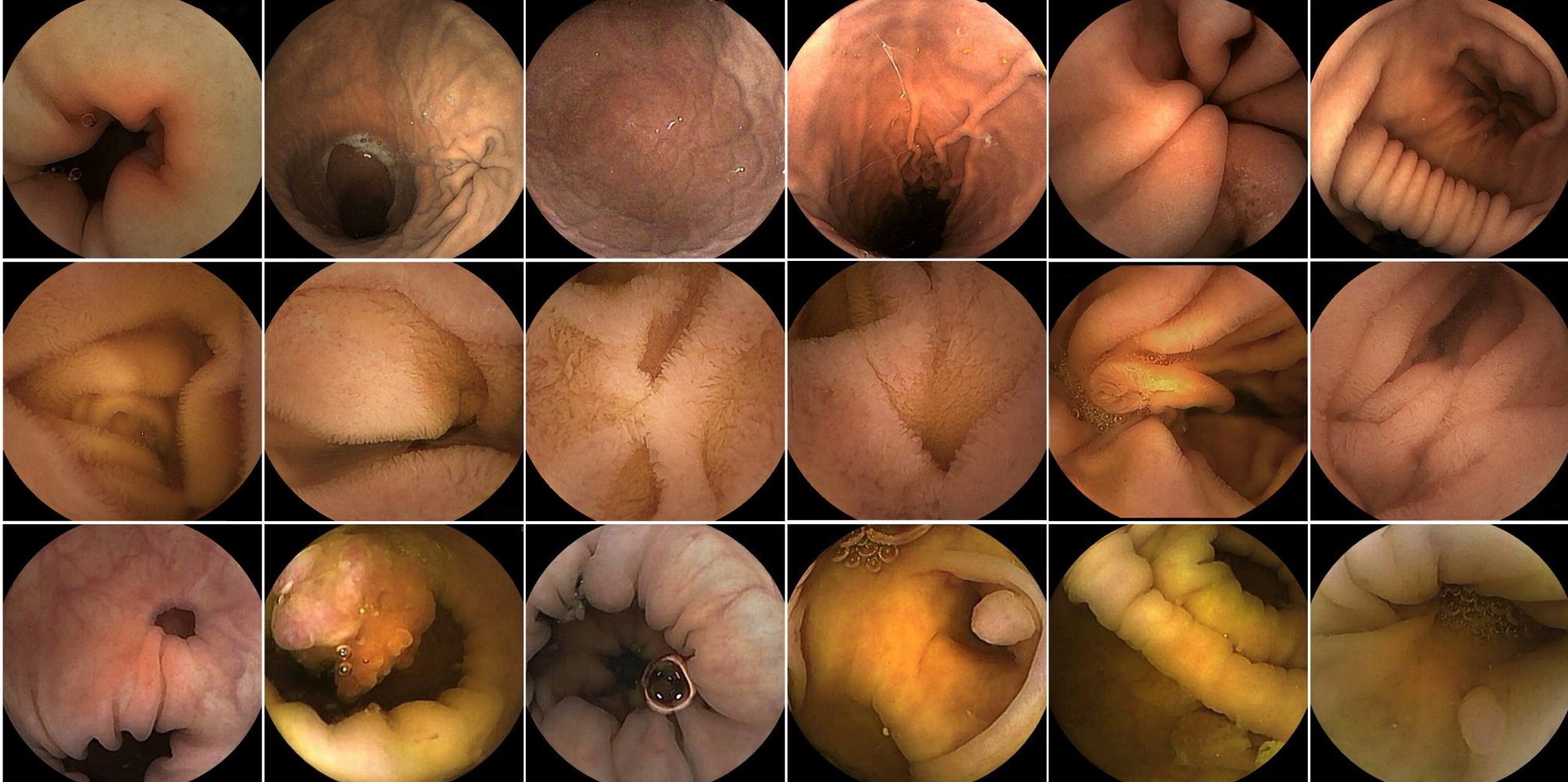
OMOM® Colon Capsule Endoscopy

CC Capsule



See Clearer, Faster and More

The *OMOM*[®] capsule series sets a new standard in capsule endoscopy hardware. With higher resolution, an ultra-wide field of view, *Speed Sense* technology, and extended battery life, it delivers exceptional image quality that helps physicians to see clearer, faster, and more for detailed mucosal visualization.



ONE Recorder for All OMOM® Capsules

Featured with auto pairing, flexible workflow, real-time display, ultra-large capacity, our versatile recorder is designed to work seamlessly with all OMOM® capsules, significantly lowering examination costs.

Real-time Display

The recorder features real-time image display, enabling accurate tracking of capsule location and procedure progress.

Auto Pairing








After connecting the antenna belt, the recorder can automatically search and pair with the capsule nearby. It ensures quick, efficient operation.

Ultra-large Capacity

Maximally 3 cases can be stored in one recorder, allowing uninterrupted daily activities.

Flexible Workflow

Supported by auto pairing function, patient check-ins can be set up either before or after the procedure. This allows examinations to start without a computer connection, making remote procedures available.

 Capsule	 Dimension	 Resolution	 Field of view	 View angle	 Battery	 Frame rate
HD Capsule	25.4*11 mm	512*512 pixel	50 mm	172°	12 h	2-10 fps
RC Capsule	30*11.5 mm	512*512 pixel	50 mm	172°	12 h	2-10 fps
CC Capsule	32.3*11.5 mm	360*360 pixel	50 mm	344°	12 h	4-35 fps

AI-Powered Software

VUESmart is case reading software for all three of OMOM® capsule endoscopies, offering an all-in-one workstation for case management, AI-assisted reading and report generation with a seamless workflow. The proprietary algorithm simplifies the huge images analysis and interpretation, making the case reading easier than ever. With reduced reading time and more evident details, **SmartScan** helps healthcare professionals achieve faster and more accurate diagnosis.



SmartScan

AI Features for Data Processing

By processing raw data and deleting up to 90% of redundant images, **SmartScan** identifies up to 5 gastric abnormalities and 17 different types of intestinal abnormalities.

When **SmartScan** is completed, **SmartView** and **SmartFinding** functions are ready for use, streamlining the reading process for healthcare professionals.

SmartView

Efficient Video Reading

SmartView is a video reading mode which exclusively displays the selected images after redundancy deletion by **SmartScan**.

It significantly shortens the reading time for reviewers to recognize the landmarks, to identify abnormalities, to interpret target images as well.

SmartFinding

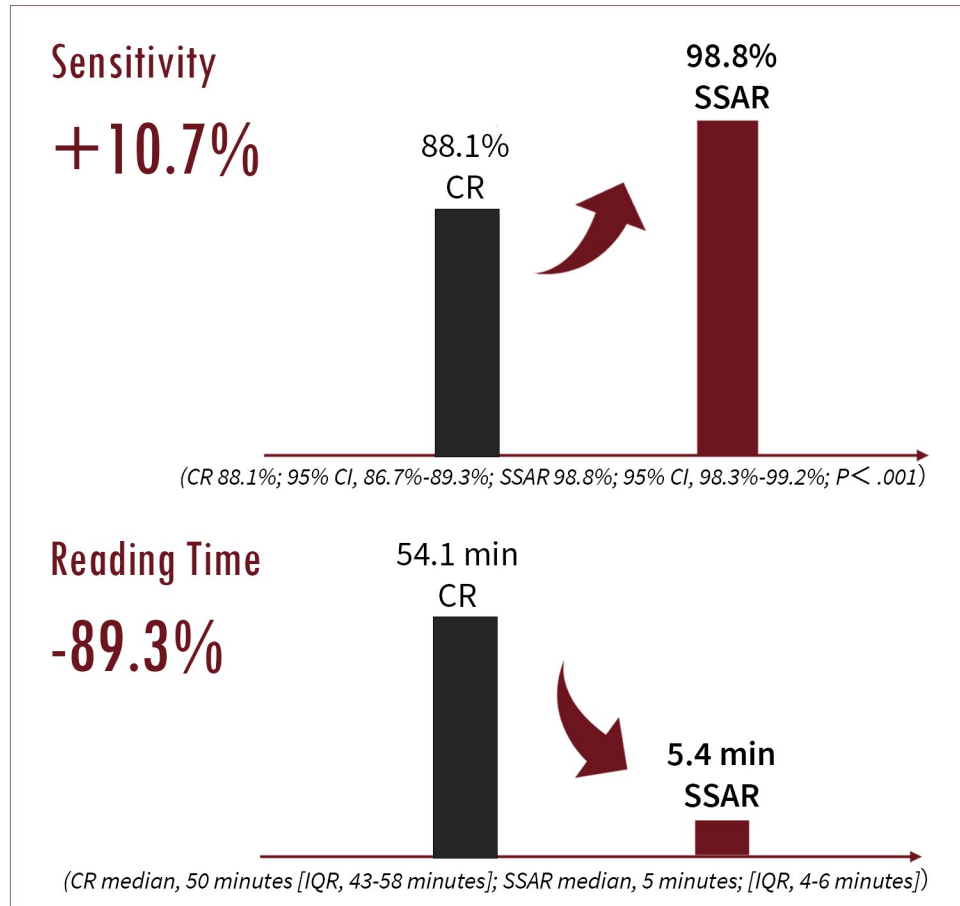
Suspected Lesions Review

SmartFinding is an image reading mode where reviewers can check all the images tagged with suspected lesions that are detected by **SmartScan**. It provides reviewers with more evident details and helps them generate a quick and accurate diagnosis.

Category	Gastric Abnormalities (5)	Intestinal Abnormalities (17)
Protruding Lesions	Polyp(s)	Venous Structure, Nodule, Mass/Tumour, Polyp(s)
Flat Lesions	Redness	Angioectasia, Plaque Red, Plaque White, Red Spot, Abnormal Villi
Excavated Lesions	Erosion, Ulcer	Erosions, Ulcer, Aphtha
Content	Blood	Blood, Parasite
Mucosa		Lymphangiectasia, Erythematous, Oedematous

Literature Review

A total of 5,825 small bowel capsule endoscopy examinations were collected from 51 medical centers to train and to validate the *SmartScan*. This clinical study was published in JAMA Network Open and showed that compared with Conventional Reading (CR), *SmartScan* Assisted Reading (SSAR) maintains high sensitivity of 98.8% while reducing reading time to 5.4 minutes.



SmartScan

Xie X et al. *JAMA Network Open*; 2022;5(7):e2221992.

Development and Validation of an Artificial Intelligence Model for Small Bowel Capsule Endoscopy Video Review

Fintan J O'H et al. *Thieme Endoscopy International Open* 2023

Capsule Endoscopy with Artificial Intelligence Assisted Technology: Real World Usage of a Validated AI Model for Capsule Image Review

Xia Xie et al. *Gastrointest Endosc.* 2024 Jun 6:S0016-5107(24)03259-0. doi: 10.1016/j.gie.2024.06.004.

A New Artificial Intelligence System for both Stomach and Small Bowel Capsule Endoscopy

OMOM® RC

Xie X et al. *Lancet Gastroenterol Hepatol* 2021; VOLUME 6, ISSUE 11, P914-921

Fully Automated Magnetically Controlled Capsule Endoscopy for Examination of the Stomach and Small Bowel: A Prospective, Feasibility, Two-centre Study

Xiaotong W et al. *Therap Adv Gastroenterol.* 2023 Oct 27:16:175628482312069 91.

A systematic review on diagnosis and treatment of gastrointestinal diseases by magnetically controlled capsule endoscopy and artificial intelligence

OMOM® HD

Maria Manuela E et al. *Life*; Volume 13, issue 9, 10.3390, life13091809

Capsule Enteroscopy Using the Mirocam® versus OMOM® Systems: A Matched Case-Control Study



Chongqing Jinshan Science & Technology (Group) Co., Ltd

No. 18, Nishang Road, Liangjiang New Area, 401120, Chongqing, China

T: +86-23-8609 8096 F: +86-23-8609 8777

Email: international@jinshangroup.com

www.jinshangroup.com

